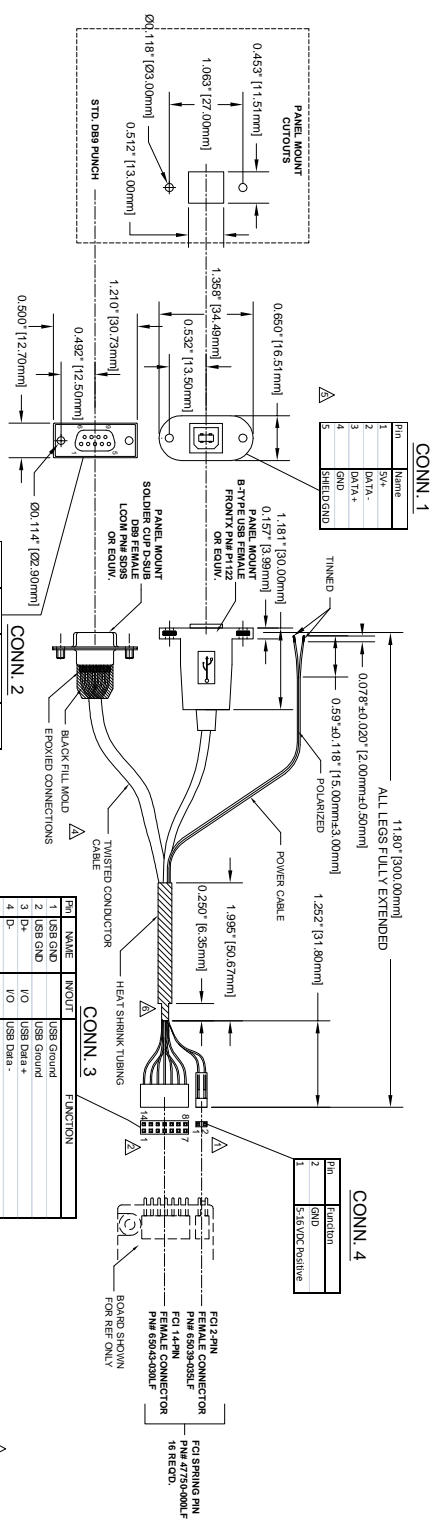


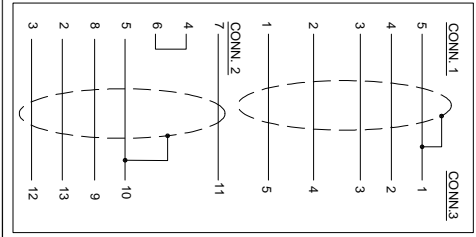
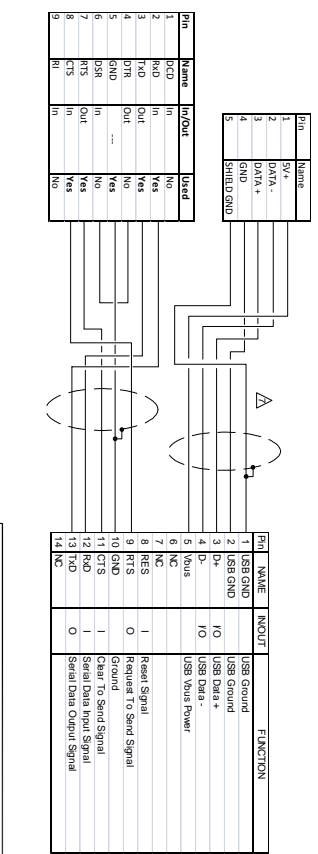
REV	DESCRIPTION	DWG. BY	CHK.	ENG	DATE
1	PIVOT DETAIL CHANGE (PANEL MOUNT CONNECTOR) / PIVOT POINTS P/N CHANGE ENG	RS	RS		11/2018

B-TYPE USB FEMALE / STD SERIAL



ELECTRICAL TEST:

1. 100% TEST OPEN, SHORT, MISS WIRE)
2. CONTACT RESISTANCE: 2 OHM MAX
3. INSULATION RESISTANCE: 10 M OHM MIN
4. HI-POT: 300V DC/10ms



NOTES:

1. ALL MATERIALS TO BE 94V RATED

REV. 1 CHANGES

- △ PIN CHANGE
- △ PIN CALLOUT CHANGE
- △ PINOUT SCHEMATIC CHANGE
- △ BLACK MOLD FILL
- △ PIN #5 SHIELD GROUND (DRAIN WIRE)
- △ WIRES STRIPPED BACK 0.25" BEHIND HEAT SHRINK
- △ PINOUT SCHEMATIC DETAIL CHANGE

CABLE PART NUMBERING KEY								
CABLE	DASH	CABLE LENGTH (mm)	DASH	USB	SERIAL	POWER	DASH	PART IDENT.
GBL-CABLE	-	XXX	-	X	0-NONE	X	-	XX
ADAPTER	-	-	-	1-A-TYPE	0-NONE	-	-	-
GBL	-	300	-	2-B-TYPE	1-DB9	1-LEAD	-	00

NOTICE OF PROPRIETARY RIGHTS
 THIS DOCUMENT, AND THE INFORMATION IT CONTAINS, IS PROPRIETARY TO WACOM. IT MUST NOT BE DUPLICATED, OR ITS CONTENTS USED OR DISCLOSED (IN WHOLE OR IN PART) WITHOUT WRITTEN PERMISSION FROM WACOM.

Wacom Technology Corporation
 1809-A Hur Industrial Blvd.
 Cedar Park TX, 78613
 PH: 512-275-0604
 FX: 512-275-0605

DATE	DATE	TITLE:	SIZE	REV.
1/13/09	DATE	B TYPE USB FEMALE STANDARD SERIAL	A	1
XX	ENG CHK	P/N: CBL-300-211-00	DWG. NO.	
DATE	APPROVED	WTCA-EN-0022		
SCALE	NA			
1 OF 1	SHEET			