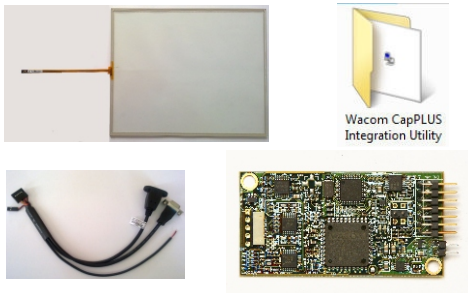




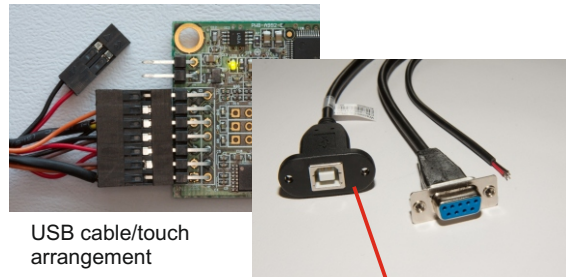
CapPLUS Quick Start Guide

Software:

1 You will need to have the following;



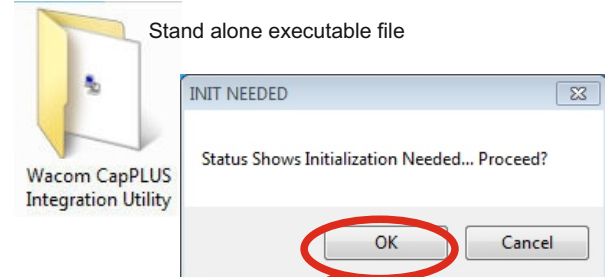
2 Connect controller to PC via USB cable



USB cable/touch arrangement

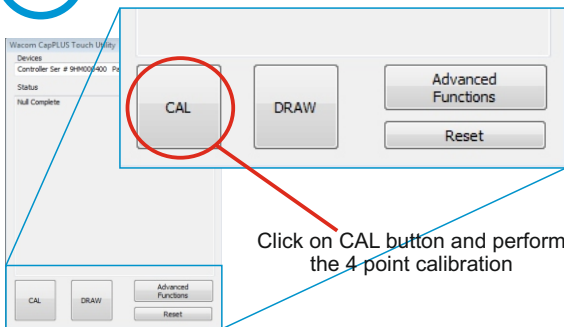
Connect to PC using USB

3 Run Wacom CapPLUS Integration Utility for first time



Select 'OK'

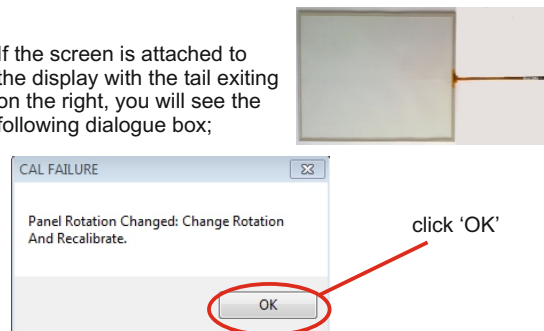
4 Run Calibration



Click on CAL button and perform the 4 point calibration

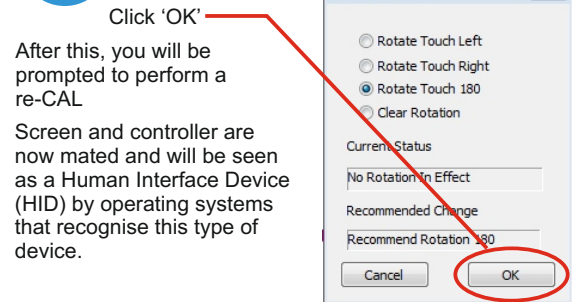
5 Cal Failure

If the screen is attached to the display with the tail exiting on the right, you will see the following dialogue box;



click 'OK'

6 Cal Failure; Touch rotation



Click 'OK'

After this, you will be prompted to perform a re-CAL

Screen and controller are now mated and will be seen as a Human Interface Device (HID) by operating systems that recognise this type of device.

Set up of the components is now completed